

ACMC-E1-100BTNT

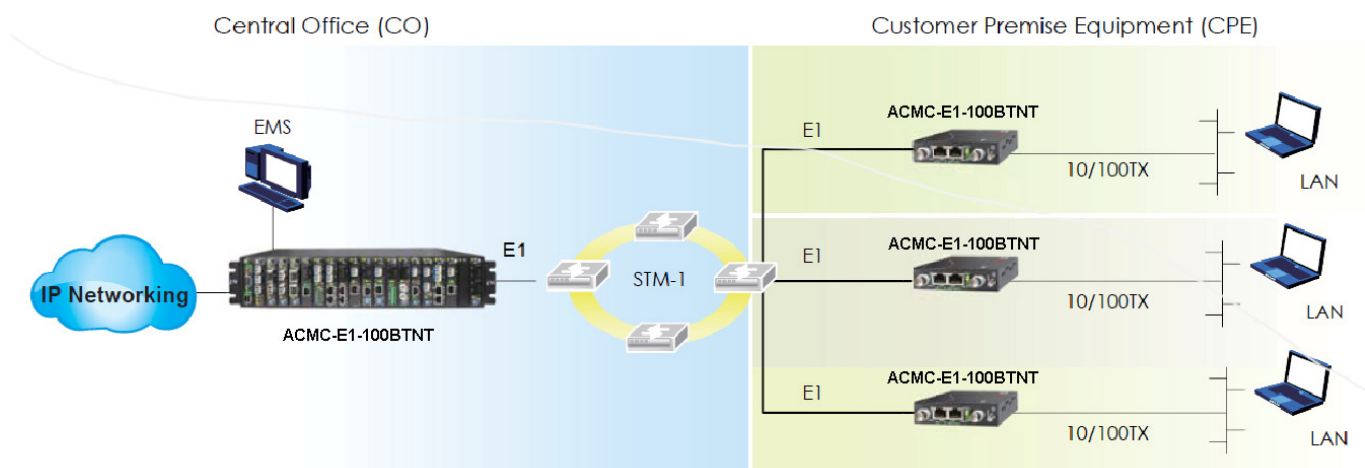
Ethernet Bridge over E1

Overview

The ACMC-E1-100BT is a slide-in card E1 Ethernet Bridge capable of providing 1x E1 lines for cost-effective connection of 10/100BaseTX or 100Base-FX LANs over E1 transports. The ACMC-E1-100BT transmits up to a 2.048Mbps Ethernet bridge channel (HDLC encapsulated) over E1 links. The ACMC-E1-100BT supports an E1 attenuation of up to 43 dB on twisted pair or coax cable. This provides an approximate operating range up to 2km (using 22AWG). The ACMC-E1-100BT fully meets E1 specifications including ITU-T G.704 and G.823. The ACMC-E1-100BT features diagnostic capabilities for performing remote loopback. The operator at either end of the line may test both the ACMC-E1-100BT and the line in the digital loopback mode. The Ethernet copper interface supports auto-negotiation and auto MDI/MDIX, allowing plug-and-play Ethernet connection without any additional configuration.

Features

- Standalone RS232 console management via CH01M
- LED Alarm indication
- SNMP management with ACME-A and ACME-E1 chassis
- Fully compatible with ACME-A and ACME-E1 chassis
- Unbalanced E1/BNC or balanced E1/RJ45
- Auto-Negotiation
- Built-in HDLC bridge operates at WAN rate
- Connects one Fast Ethernet over E1 links (64k~2048Kbps)



Technical specifications

Interface

Framing

framed / unframed

Standard

ITU-T G.703/G.704/G.706 & G.732, G.823

Bit rate

2.048Mbps± 50ppm

Line code

HDB3

Clock setting

Internal OSC or recovery clock

Receive level

-43dB

Line impedance

75 ohm (BNC) / 120 ohm (RJ45)

Jitter Performance

Complies with ITU-T G.823

Pulse Mask

Complies with ITU-T G.703

Pulse amplitude

Nominal 2.37V ± 10%

Delay Variance

220ms

Connector

RJ45, BNC

Diagnostics

Digital remote loopback

Standard

IEEE 802.3, 802.3u

Data rate

10/100Base-TX, Half/Full duplex

Indications

Connector

RJ45 10/100Base-TX

Power,

ALM,E1 signal loss ,

E1 Alarm

AIS , LOF , RAI, LOMF),

LAN

link /ACT, 10/100M , SD(100Base-FX)

Power Input

AC adapter : 100~240VAC to 12VDC

AC 100 ~ 240V, DC -18 ~ 75V

Power Consumption: <12

Mechanical

Dimensions

DC12 : 160 x 88 x 24mm (D x W x H)

AC/DC48/AD : 201 x 135 x 35mm (D x W x H)

Weight

DC 12 : 0.28kg, AC/DC48/AD : 0.58kg

Temperature

0 ~ 60°C (Operating), -10 ~ 70°C (Storage)

Humidity

10 ~ 90% RH (non-condensing)

Certifications

CE, FCC, RoHS

MTBF

65,000 hrs