

# ACMC 10/100iS-2 Board



## Dual Channel Fast Ethernet OAM Media Converter/Switch

The ACMC-10/100iS-2 is an IEEE802.3ah OAM compliant two copper-to-two optical fibre ports Fast Ethernet solution designed to convert/switch data between 10/100BASE-TX and 100BASE-FX. By offering advanced features like bandwidth control, this Fast Ethernet Media Converter/Switch provides an outstanding performance as Customer Premises Equipment in Metro LAN, Campus and FTTH applications. With SNMP and Web-based Management in the IEEE 802.3ah OAM-compliant ACMC 10/100iS-2, the network administrator can easily carry out from the Central Office 'carrier-class' Operation, Administration and Maintenance of every remote ACMC 10/100iS-2 Board installed in the Customer Premises. This Line of Fast Ethernet media converters is completely transparent to Layer 2 and Layer 3 protocols, including IEEE 802.1q, VLAN tag, Q in Q, STP, IPX, IP, etc.

### Features

- Local / Remote IEEE 802.3ah OAM / IP In-band management
- Dual converter 10/100BASE-TX to 100BASE-FX
- Auto-Negotiation or forced mode
- Auto MDI/MDIX
- Forwards 2046 bytes (max.) packets in switch mode
- Forwards 9K Jumbo packets in converter mode
- Supports Q in Q double tagged frame transparent
- Supports IEEE 802.1q Tag VLAN pass thru
- Bandwidth control (Nx32Kbps or Nx512Kbps)
- Flow control (Pause)
- Supports remote CPE power fail detect (dying gasp)
- Far End Fault functionality
- Supports Link Fault Pass through (LFP)
- Supports Loop Back Test
- Supports RMON counter
- D/D function for supported SFP fibre transceiver
- Auto Laser Shutdown (ALS)
- Fibre Hardware Reset (FHR)
- Online local/remote f/w upgrade

#### Optical Interface

- Connector: SFP LC
- Data rate: 100Mbps
- Duplex mode: Full duplex
- Fibre: MM 50/125µm, 62.5/125 µm  
SM 9/125 µm
- Distance: MM 2km, SM 15/30/50/80/120km
- WDM 20/40/60/80km
- Wavelength: MM 1310nm, SM 1310,1550nm  
WDM: 1310Tx/1550Rx (type A)  
1550Tx/1310Rx (type B)

#### Electrical Interface

- Connector: RJ45
- Data rate: 10Mbps, 100Mbps
- Duplex mode: Half / Full duplex
- Cable: 10Base-T Cat.3, 4, 5, UTP,  
100Base-TX Cat.5, 5e or higher

**Standard** IEEE 802.3, IEEE 802.3u, TS-1000

**Indications** (Power, Test, FX-Link, TX-Speed, TX-Link )

**Power Input** Card : 12VDC

Standalone : AC, DC options

**Power Consumption** < 4W

**Dimension** 155 x 88 x 23mm (D x W x H)

**Weight** 120g

**Temperature** 0 ~ 60°C (Operating), -10 ~ 70°C (Storage)

**Humidity** 10 ~ 90% non-condensing

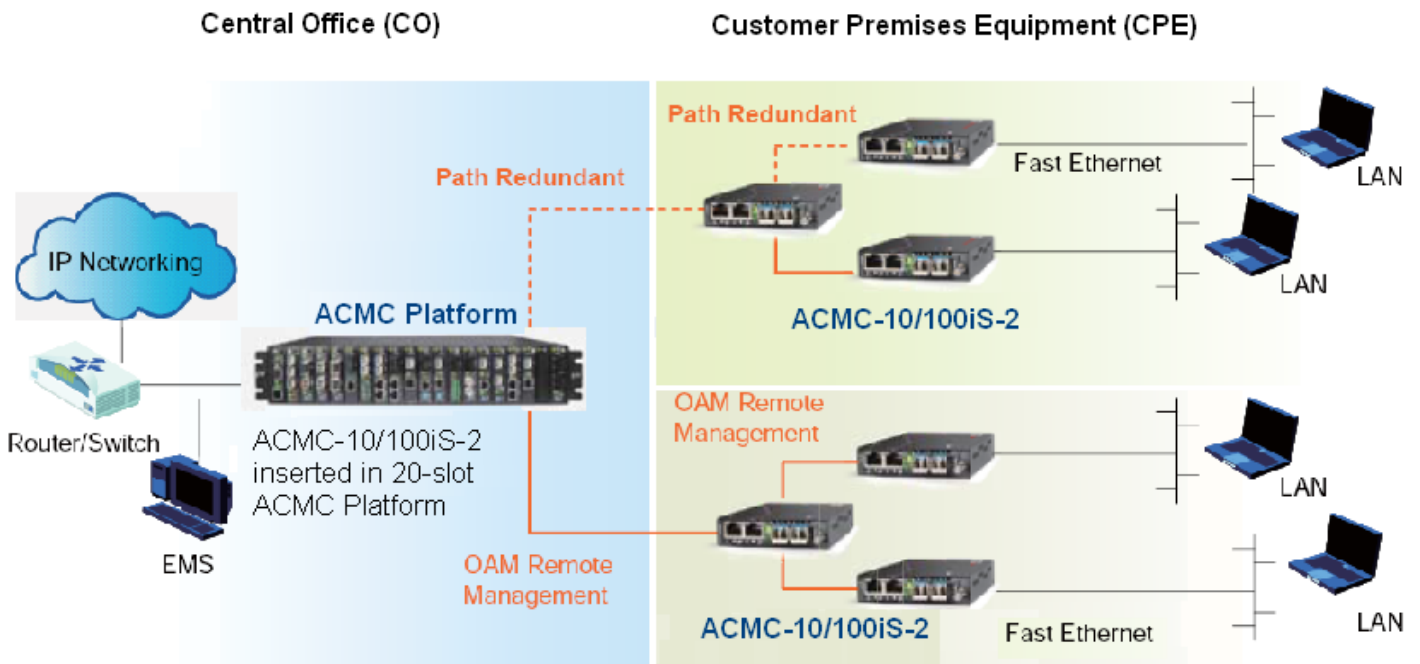
**Certification** CE, FCC, LVD, RoHS

**MTBF** 65,000 hrs (25°C)

# ACMC 10/100iS-2

## NMC Management Applications

### Point to Multi-Point implementation with Optical Line protection and OAM Management from the Central Office



Support up to 9K Jumbo Frames

### Fibre Ring implementation with OAM Remote Management

